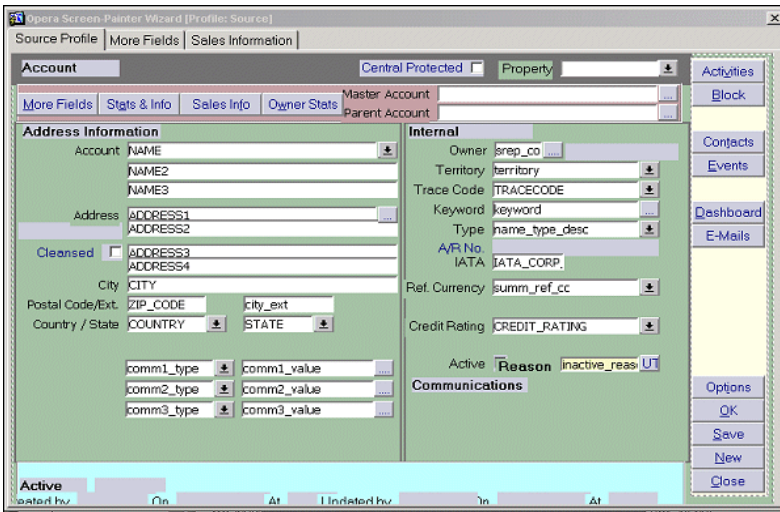


Source Profile Screen Painting Elements

The Source Profile screen can have elements painted in the Header (Red), Details (Green), and Button (Yellow) portions of the screen. See below for all of the possible elements.



In any field that is setup as a multi-select field, if a manual entry does not match any of the configured values, then the multi-select list of values for the field is displayed.

Details				
Element	Type	Default Prompt	Field Name	Comments
ACC_PHONE_TYPE1_IB	BUTTON			
ACC_PHONE_TYPE2_IB	BUTTON			
ACC_PHONE_TYPE3_IB	BUTTON			
ACC_PHONE1_IB	BUTTON			
ACC_PHONE2_IB	BUTTON			
ACC_PHONE3_IB	BUTTON			
ACC_TITLE	DISPLAY_ITEM	ACCOUNT		
ADDR_CLEANSED_STATUS	CHECKBOX	CLEANSED		
ADDRESS1	TEXT_ITEM			
ADDRESS2	TEXT_ITEM			
ADDRESS3	TEXT_ITEM			
ADDRESS4	TEXT_ITEM			
ADDRESS_TYPE	DISPLAY_ITEM			
ADDRESS_TYPE_DESC	DISPLAY_ITEM			
ADDRESS_TYPE_IB	BUTTON			
AR_NO_CENTRAL	TEXT_ITEM	CENTRAL A/R NO.		
AR_NO_MAIN_IB	BUTTON			
AR_NO1	DISPLAY_ITEM	A/R NO.		
AR_NO1_IB	BUTTON			
AUTO_FOLIO_SETTLEMENT_TYPE	TEXT_ITEM	AUTO FOLIO SETTLEMENT TYPE		
AUTO_FOLIO_SETTLEMENT_TYPE_IB	BUTTON			
BILLING_INS_MAIN_IB	BUTTON	ROUTING INSTRUCTIONS		
BL_MSG	TEXT_ITEM	RULE		
CBL_IND	CHECKBOX	RESTRICTED		
CITY	TEXT_ITEM	CITY		
CITY_EXT	TEXT_ITEM	EXT.		
COMMISSION_ACCOUNT_NAME_MAIN	TEXT_ITEM	BANK ACCOUNT		
COMMISSION_CODE_MAIN	BUTTON			
COUNTRY_FLAG_IMAGE	IMAGE			
COUNTRY_CODE	TEXT_ITEM	COUNTRY		
COUNTRY_CODE_IB	BUTTON			
CREDIT_RATING	TEXT_ITEM	CREDIT RATING		
CREDIT_RATING_IB	BUTTON			
CRS_NAMEID	TEXT_ITEM	CRS ID		
DISTRICT	DISPLAY_ITEM	DISTRICT		District associated with the address.
EMAIL_YN	CHECKBOX	ALLOW EMAIL		
F_ACC_PHONE_TYPE1	TEXT_ITEM			

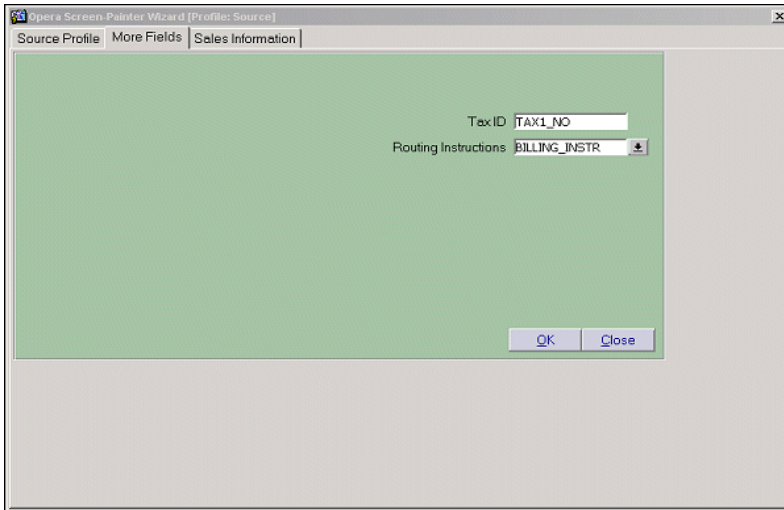
F_ACC_PHONE_TYPE2	TEXT ITEM		
F_ACC_PHONE_TYPE3	TEXT ITEM		
F_ACC_PHONE1	TEXT ITEM		
F_ACC_PHONE2	TEXT ITEM		
F_ACC_PHONE3	TEXT ITEM		
F_ACTIVE_YN	CHECKBOX	ACTIVE	
F_ADDRESS1	TEXT ITEM	ADDRESS	
F_ADDRESS2	TEXT ITEM		
F_ADDRESS3	TEXT ITEM		
F_ADDRESS4	TEXT ITEM		
F_AR_NO_MAIN	TEXT ITEM	A/R NO.	
		ROUTING	
F_BILLING_INS_MAIN	TEXT ITEM	INSTRUCTIONS	
F_BL_MSG_MAIN	TEXT ITEM	RULE	
F_CITY	TEXT ITEM	CITY	
F_COMMISSION_CODE_MAIN	TEXT ITEM	COMMISSION CODE	
F_COUNTRY	TEXT ITEM	COUNTRY	
F_IATA_CONSORTIA	TEXT ITEM	CONSORTIA	
F_IATA_CORP_NO	TEXT ITEM	IATA	
F_INACTIVE_REASON	TEXT ITEM	REASON	
F_KEYWORD	TEXT ITEM	KEYWORD	
F_KEYWORDS	TEXT ITEM		
F_NAME	TEXT ITEM	ACCOUNT	
F_NAME_IB	BUTTON		
F_NAME_TYPE	TEXT ITEM	TYPE	
F_NAME2	TEXT ITEM		
F_NAME3	TEXT ITEM		
F_SALESREP	DISPLAY_ITEM		
F_SREP_CODE	TEXT ITEM	OWNER	
F_STATE	TEXT ITEM	STATE	
F_SUM_REF_CC	TEXT ITEM	REF. CURRENCY	
F_TERRITORY	TEXT ITEM	TERRITORY	
F_TRACECODE	TEXT ITEM	TRACE CODE	
F_ZIP_CODE	TEXT ITEM	POSTAL CODE	
F_ZIP_EXTENSION	TEXT ITEM	EXT.	
GUEST_PRIV_YN	CHECKBOX	GUEST PRIVACY	
IATA_COMP_TYPE	TEXT ITEM	TYPE	
IATA_COMP_TYPE_IB	BUTTON		
IATA_CONSORTIA_IB	BUTTON		
INACTIVE_REASON_IB	BUTTON		
KEYWORD_IB	BUTTON		
LABEL 1 - LABEL 20	DISPLAY_ITEM		
LANGUAGE	TEXT ITEM	LANGUAGE	
LANGUAGE_CODE_MAIN_IB	BUTTON		
LBL_ADDRESSES	DISPLAY_ITEM		
		ADDRESS	
LBLADDRESSFRAME	DISPLAY_ITEM	INFORMATION	
LBLCOMMUNICATIONSFRAME	DISPLAY_ITEM	COMMUNICATIONS	
LBLINTERNALFRAME	DISPLAY_ITEM	INTERNAL	
NAME_TAX_TYPE_MAIN	TEXT ITEM	TAX TYPE	
NAME_TAX_TYPE_MAIN_IB	BUTTON		
NAME_TYPE_IB	BUTTON		
PAYMENT_DUE_DAYS_MAIN	TEXT ITEM	PMT. DUE DAYS	
			When the down arrow button is displayed, then values are available for selection and have been configured in the Confiuration>Setup>Screen Design>List of Values Maintenance>LOV Value Maintenance menu option and in the PAY DAYS LOV Group.
PAYMENT_DUE_DAYS_MAIN_IB	BUTTON		
PHONE_YN	CHECKBOX	ALLOW PHONE	
POSTAL_CODE	TEXT ITEM	ZIP CODE	
PROTECTED	LIST	PROTECTED	
REPLACE_ADDRESS	CHECKBOX	REPLACE ADDRESS	
RESORT	TEXT ITEM	PROPERTY	
RESORT_IB	BUTTON		
SMS_YN	CHECKBOX	ALLOW SMS	
SREP_CODE_IB	BUTTON		
STATE_CODE	TEXT ITEM		
STATE_CODE_IB	BUTTON		
SUM_REF_CC_IB	BUTTON		
TAX_CATEGORY	TEXT ITEM	TAX CATEGORY	
TAX_CATEGORY_IB	BUTTON		
TAX_OFFICE	TEXT ITEM	TAX OFFICE	
TAX_OFFICE_IB	BUTTON		
TAX_PERC1	TEXT ITEM	TAX PERC1	

TAX_PERC2	TEXT ITEM	TAX PERC2	
TAX_PERC3	TEXT ITEM	TAX PERC3	
TAX_PERC4	TEXT ITEM	TAX PERC4	
TAX_PERC5	TEXT ITEM	TAX PERC5	
TAX_TYPE	TEXT ITEM	TAX TYPE	
TAX_TYPE_IB	BUTTON		
TAX1_NO_MAIN	TEXT ITEM	TAX ID	
TAX2_NO_MAIN	TEXT ITEM	TAX ID2	
TERRITORY_IB	BUTTON		
TRACECODE_IB	BUTTON		
UDFC01 – UDFC40	TEXT ITEM		
UDFC01_IB – UDFC40_IB	BUTTON		
UDFD01 – UDFD20	TEXT ITEM		
UDFD01_IB – UDFD05_IB	BUTTON		
UDFN01 – UDFN40	TEXT ITEM		
UDFN01_IB – UDFN40_IB	BUTTON		
URL_BUTTON1	BUTTON		When the object is screen painted on the form, a URL address will need to be entered in the URL field on the button Properties form. When the button is clicked on, the user will be taken to the URL address that was configured for the button. If a URL is not configured for the button and the button is clicked on, nothing will happen.
URL_BUTTON2	BUTTON		When the object is screen painted on the form, a URL address will need to be entered in the URL field on the button Properties form. When the button is clicked on, the user will be taken to the URL address that was configured for the button. If a URL is not configured for the button and the button is clicked on, nothing will happen.
VIP_STATUS	TEXT ITEM	VIP	
VIP_STATUS_IB	BUTTON		
XLANGUAGE_POP	TEXT ITEM	ALT. LANGUAGE	
XNAME	TEXT ITEM	ALT. NAME	Enter or displays the alternate last name for the profile. When the General>Alternate Name application function and the General>Auto Alternate Name Translate application parameter are set to Y, the cursor is automatically in this field when the Profile screen opens.

Footer Information			
<i>Element</i>	<i>Type</i>	<i>Default Prompt Field Name</i>	<i>Comments</i>
CONTRACTS_LAMP	DISPLAY ITEM		
LAMP_BOOKINGS	DISPLAY ITEM		
LAMP_CONTACTS	DISPLAY ITEM		
LAMP_SUBSCRIPTION	DISPLAY ITEM		
LBL_NOTES	DISPLAY ITEM		
LBLATTACHMENTS	DISPLAY ITEM		
LBLCIS	DISPLAY ITEM		
LBLMULTIADD	DISPLAY ITEM		

Buttons			
<i>Element</i>	<i>Type</i>	<i>Default Prompt Field Name</i>	
EMAIL_OK	BUTTON		
OK	BUTTON		
PB_CISLOOKUP	BUTTON		
PB_CLOSE	BUTTON		
PB_DASHBOARD	BUTTON		
PB_OPTIONS	BUTTON		
PB_POTENTIAL	BUTTON		
PB_SAVE	BUTTON		
PBM_ACTIVITY	BUTTON		
PBM_BOKING	BUTTON		
PBM_CONTACT	BUTTON		
PBM_EVENT	BUTTON		
PBM_NEW	BUTTON		

Source Profile More Fields Screen Painting Elements



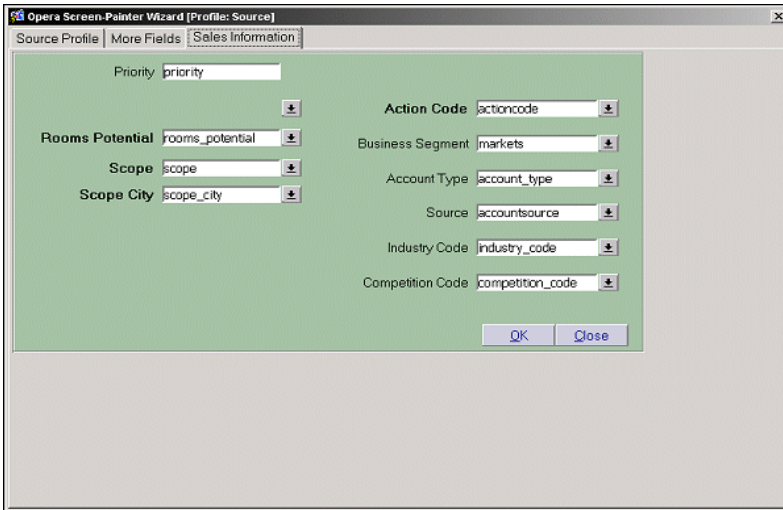
In any field that is setup as a multi-select field, if a manual entry does not match any of the configured values, then the multi-select list of values for the field is displayed.

More Fields Details

Element	Type	Default Prompt Field Name	Comments
AUTO_FOLIO_SETTLEMENT_TYPE	TEXT ITEM	AUTO FOLIO SETTLEMENT TYPE	
AUTO_FOLIO_SETTLEMENT_TYPE_IB	BUTTON		
AUTO_POPULATE_ROUTING	CHECKBOX	AUTO POPULATE YN	
BILLING_INS_IB	BUTTON		
BL_MSG_MORE	TEXT ITEM	RULE	
CBL_IND_MORE	CHECKBOX	RESTRICTED	
EMAIL_YN_MORE	CHECKBOX	ALLOW EMAIL	
F_BILLING_INS	TEXT ITEM	INSTRUCITONS	
GUEST_PRIV_YN_MORE	CHECKBOX	GUEST PRIVACY	
GUEST_TYPE	TEXT ITEM	GUEST TYPE	
GUEST_TYPE_IB	BUTTON		
INCLUDE_IN_1099_YN_MORE	CHECKBOX	INCLUDE IN 1099	
LABEL 1 - LABEL 20	DISPLAY ITEM		
MAIL_YN_MORE	CHECKBOX	ALLOW MAIL	
NAME_TAX_TYPE	TEXT ITEM	TAX TYPE	
NAME_TAX_TYPE_IB	BUTTON		
PAYMENT_DUE_DAYS	TEXT ITEM	PMT. DUE DAYS	
PAYMENT_DUE_DAYS_IB	BUTTON		When the down arrow button is displayed, then values are available for selection and have been configured in the Confiruation>Setup>Screen Design>List of Values Maintenance>LOV Value Maintenance menu option and in the PAY DAYS LOV Group.
PAYMENT_METHOD	TEXT ITEM	PAYMENT	
PAYMENT_METHOD_IB	BUTTON		
PHONE_YN_MORE	CHECKBOX	ALLOW PHONE	
PROTECTED_MORE	LIST	PROTECTED	
SMS_YN_MORE	CHECKBOX	ALLOW SMS	
TAX_CATEGORY_MORE	TEXT ITEM	TAX CATEGORY	
TAX_CATEGORY_MORE_IB	BUTTON		
TAX_OFFICE_MORE	TEXT ITEM	TAX OFFICE	
TAX_OFFICE_MORE_IB	BUTTON		
TAX_PERC1_MORE	TEXT ITEM	TAX PERC1	
TAX_PERC2_MORE	TEXT ITEM	TAX PERC2	
TAX_PERC3_MORE	TEXT ITEM	TAX PERC3	
TAX_PERC4_MORE	TEXT ITEM	TAX PERC4	
TAX_PERC5_MORE	TEXT ITEM	TAX PERC5	
TAX_TYPE_MORE	TEXT ITEM	TAX TYPE	
TAX_TYPE_MORE_IB	BUTTON		

TAX1_NO	TEXT ITEM	TAX ID	
TAX2_NO	TEXT ITEM	TAX ID2	
UDFC01_TAB2 – UDFC40_TAB2	TEXT ITEM		
UDFC01_TAB2_IB – UDFC40_TAB2_IB	BUTTON		
UDFD01_TAB2 – UDFD20_TAB2	TEXT ITEM		
UDFD01_TAB2_IB – UDFD05_TAB2_IB	BUTTON		
UDFNO1_TAB2 – UDFN40_TAB2	TEXT ITEM		
UDFNO1_TAB2_IB – UDFN40_TAB2_IB	BUTTON		
URL_BUTTON1	BUTTON		When the object is screen painted on the form, a URL address will need to be entered in the URL field on the button Properties form. When the button is clicked on, the user will be taken to the URL address that was configured for the button. If a URL is not configured for the button and the button is clicked on, nothing will happen.
URL_BUTTON2	BUTTON		When the object is screen painted on the form, a URL address will need to be entered in the URL field on the button Properties form. When the button is clicked on, the user will be taken to the URL address that was configured for the button. If a URL is not configured for the button and the button is clicked on, nothing will happen.

Source Profile Sales Information Screen Painting Elements



In any field that is setup as a multi-select field, if a manual entry does not match any of the configured values, then the multi-select list of values for the field is displayed.

Sales Information Details			
Element	Type	Default Prompt Field Name	Comments
ACCOUNT_TYPE_IB	BUTTON		
ACCOUNTSOURCE_IB	BUTTON		
ACTIONCODE_IB	BUTTON		
COMPETITION_CODE_IB	BUTTON		
F_ACCOUNT_TYPE	TEXT ITEM	ACCOUNT TYPE	
F_ACCOUNTSOURCE	TEXT ITEM	SOURCE	
F_ACTIONCODE	TEXT ITEM	ACTION CODE	
F_COMPETITION_CODE	TEXT ITEM	COMPETITION CODE	
F_INDUSTRY_CODE	TEXT ITEM	INDUSTRY CODE	
F_MARKETS	TEXT ITEM	MARKETS	
F_PRIORITY	TEXT ITEM	PRIORITY	
F_ROOMS_POTENTIAL	TEXT ITEM	ROOMS POTENTIAL	
F_SCOPE	TEXT ITEM	SCOPE	
F_SCOPE_CITY	TEXT ITEM	SCOPE CITY	

INDUSTRY_CODE_IB	BUTTON		
MARKETS_IB	BUTTON		
PB_SALES_CLOSE	BUTTON		
PB_SALES_OK	BUTTON		
PROIRITY_IB	BUTTON		
ROOMS_POTENTIAL_IB	BUTTON		
SCOPE_CITY_IB	BUTTON		
SCOPE_IB	BUTTON		
URL_BUTTON1_TAB	BUTTON		When the object is screen painted on the form, a URL address will need to be entered in the URL field on the button Properties form. When the button is clicked on, the user will be taken to the URL address that was configured for the button. If a URL is not configured for the button and the button is clicked on, nothing will happen.
URL_BUTTON2_TAB	BUTTON		When the object is screen painted on the form, a URL address will need to be entered in the URL field on the button Properties form. When the button is clicked on, the user will be taken to the URL address that was configured for the button. If a URL is not configured for the button and the button is clicked on, nothing will happen.